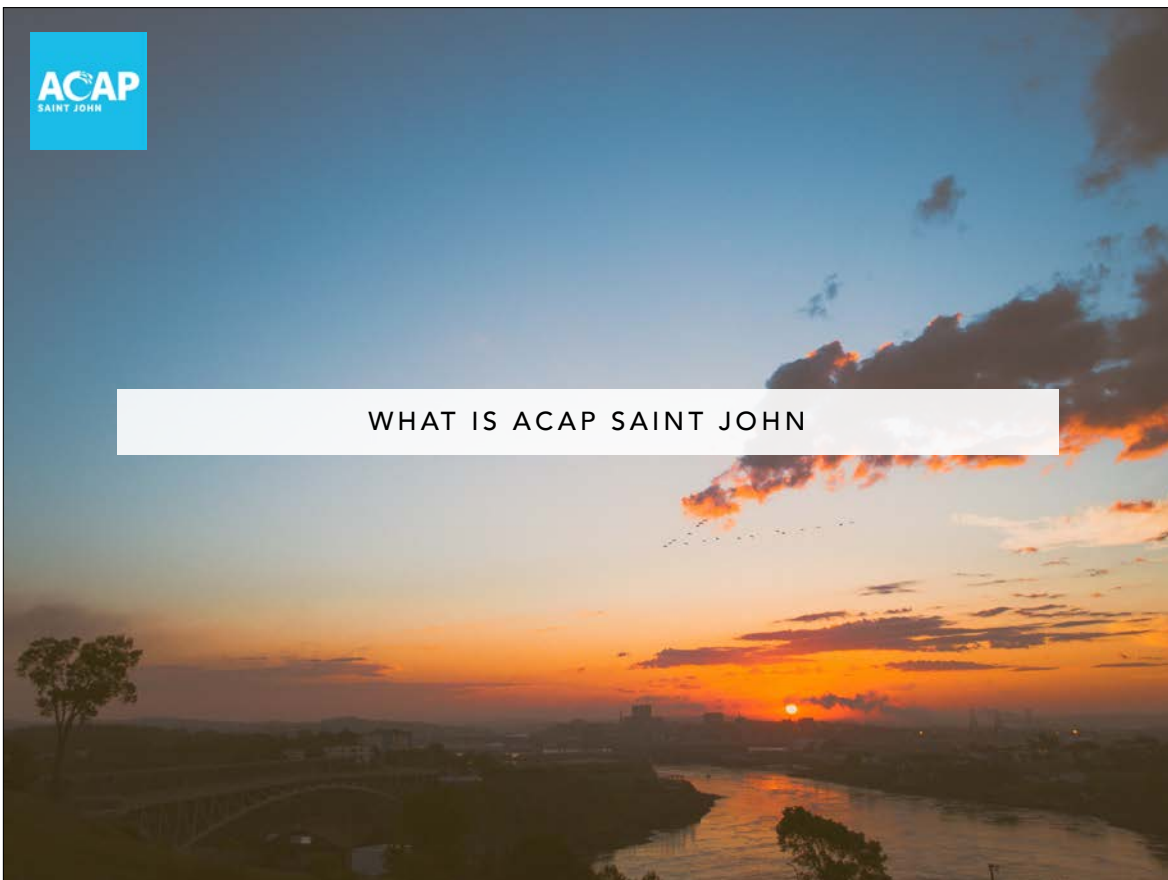




1



2

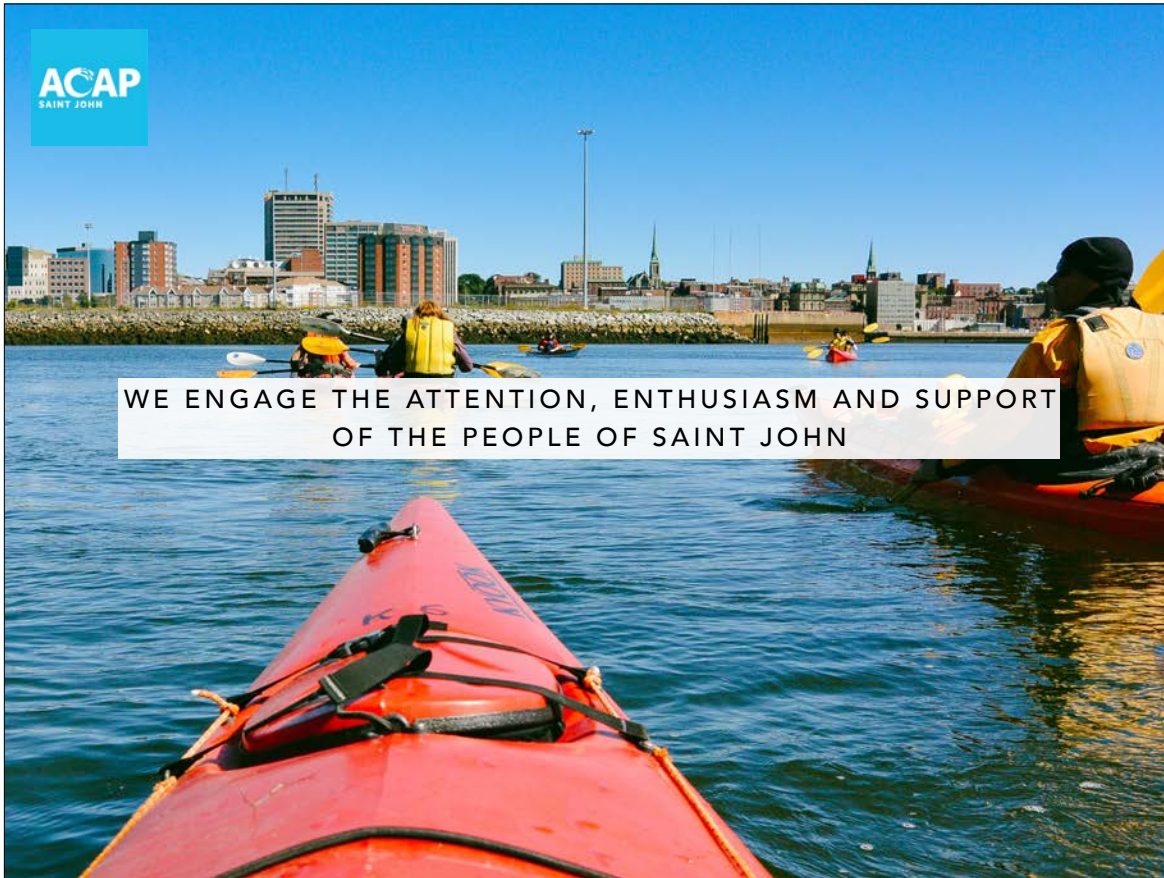


SINCE 1992, ACAP SAINT JOHN HAS BECOME KNOWN FOR PARTNERING AND WORKING WITH THE COMMUNITY TO HELP PROVIDE SOLUTIONS TO EXISTING AND PENDING ENVIRONMENTAL PROBLEMS.

ACAP SAINT JOHN ENVISIONS A SUSTAINABLE COMMUNITY THAT EMBRACES THE INTER-DEPENDENCE OF THE UNIQUE SOCIAL, ECONOMIC AND ENVIRONMENTAL CHARACTERISTICS OF THE REGION'S WATERSHEDS.

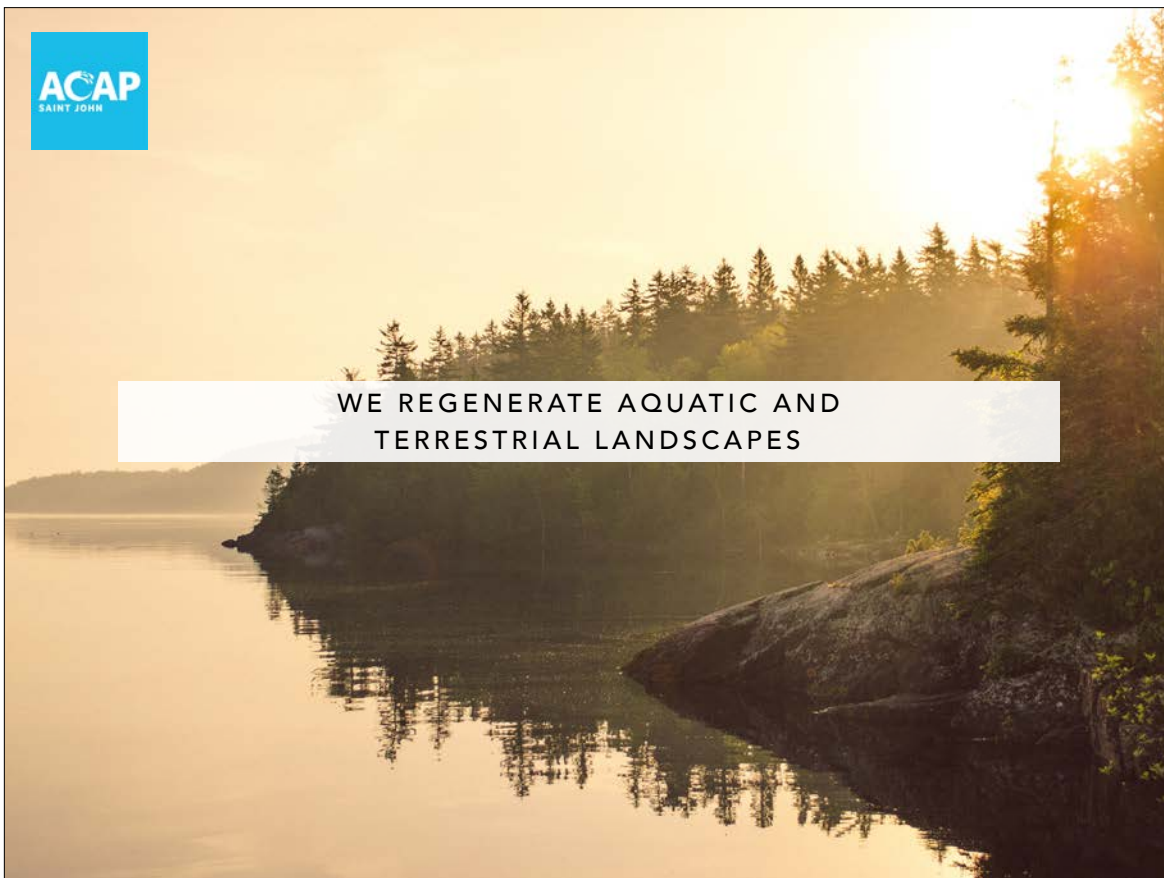


OUR STRATEGIES



WE ENGAGE THE ATTENTION, ENTHUSIASM AND SUPPORT
OF THE PEOPLE OF SAINT JOHN

5



WE REGENERATE AQUATIC AND
TERRESTRIAL LANDSCAPES

6



WE BUILD, RE-BUILD AND RETROFIT
OUR COMMUNITIES TO RESTORE
WATER BALANCE AND IMPROVE
THE SUSTAINABILITY OF THE URBAN MODEL

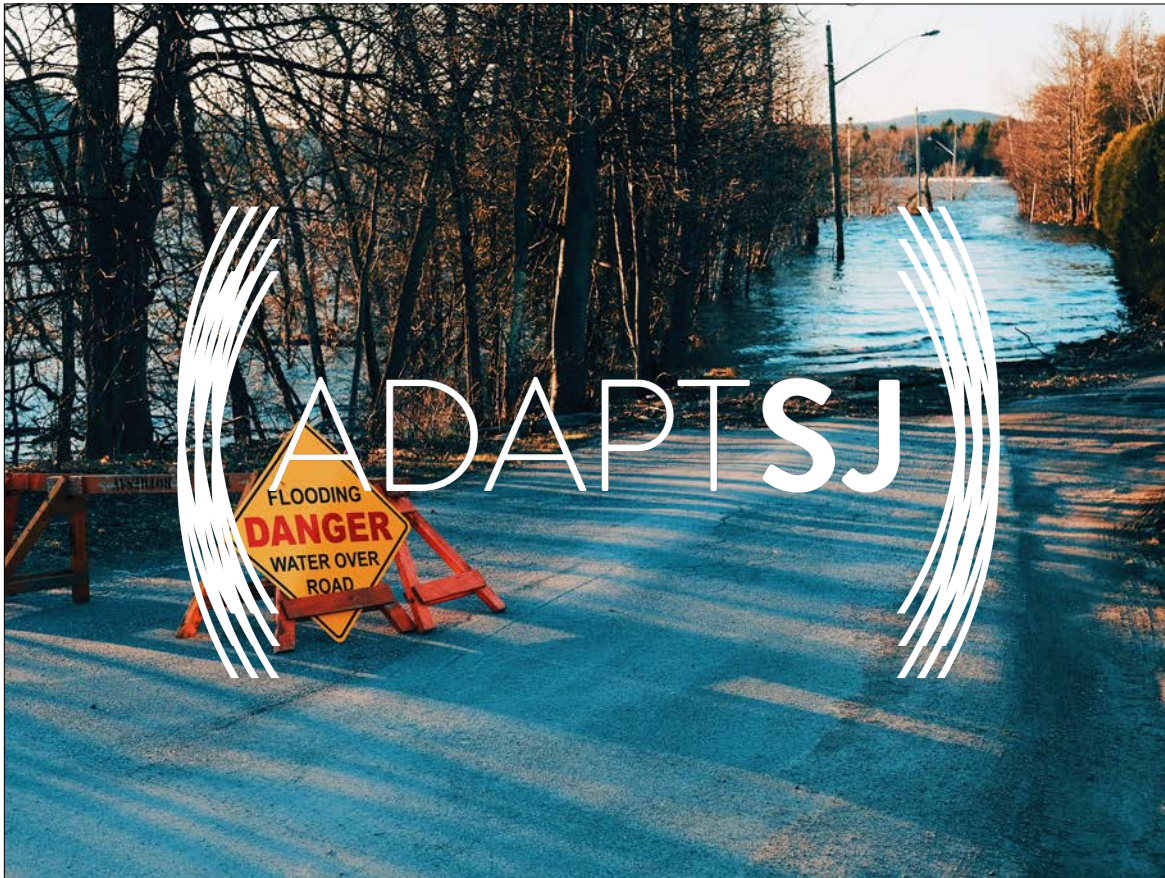
7



AT ITS HEART, ACAP IS AN ENVIRONMENTAL INCUBATOR
THAT TRANSFORMS AND EVOLVES OUR REGION'S
LANDSCAPES WITH THE HELP OF GOVERNMENTS,
COMPANIES AND COMMUNITY COLLABORATORS.

OUR WORK IS DESIGNED TO BE SEEN, FELT AND
EXPERIENCED THROUGHOUT THE ENVIRONMENT – FROM
OUR WETLANDS AND COASTLINES TO OUR STREETS AND
PUBLIC SPACES.

8



9



AdaptSJ

ACAP SAINT JOHN IS DEVELOPING CLIMATE CHANGE
ADAPTATION PLANS FOR THREE URBAN
NEIGHBOURHOODS AND FOR THE CITY AS A WHOLE

ADAPTSJ WILL SUPPORT AND INFORM THE CITY OF SAINT
JOHN'S NEIGHBOURHOOD PLANNING PROCESS

EXPLORE REGULATORY AND ON-THE-GROUND SOLUTIONS
TO CLIMATE CHANGE VULNERABILITIES

IDENTIFYING GAPS IN LEGISLATION AND MAKING
RECOMMENDATIONS FOR POLICY MEASURES

10

AdaptSJ Update - June 17, 2019 - June 10, 2019



Urban Blueprint for Water

PROJECT TENURE: JANUARY 2018-MARCH 2019

- PROVIDED CLIMATE CHANGE ADAPTATION RECOMMENDATIONS INTO THE CITY'S THREE UPCOMING NEIGHBOURHOOD PLANS (SOUTH-CENTRAL PENINSULA, NORTH-END AND LOWER-WEST SIDE)
- IDENTIFIED VULNERABILITIES IN STUDY NEIGHBOURHOODS
- DEVELOPED SOLUTIONS TO INCREASE RESILIENCY TO STORMWATER MANAGEMENT AND FLOODING
- EDUCATED THE PUBLIC ON IMPENDING CLIMATE CHANGE RISKS
- PROPOSED THREE PROJECTS (ONE FOR EACH NEIGHBOURHOOD) THAT WILL MANAGE STORMWATER RUNOFF/SEA LEVEL RISE ON CITY OWNED LANDS

11



Climate Change Adaptation Plan for Saint John

PROJECT TENURE: APRIL 2018-MARCH 2020

- IDENTIFY RISKS FOR INFRASTRUCTURE, RESIDENTS / BUSINESSES, NATURAL ENVIRONMENTS, COASTLINES AND VULNERABLE POPULATIONS
- ADAPTATION ACTIONS TO INCREASE RESILIENCY THROUGH GREEN INFRASTRUCTURE PROJECTS
- RECOMMENDATION OF BEST MANAGEMENT PRACTICES FOR STORMWATER MANAGEMENT, LAND USE PLANNING, LOW IMPACT DEVELOPMENT, AND MUNICIPAL DESIGN
- COLLABORATE WITH COMMUNITY STAKEHOLDERS TO IDENTIFY SOLUTIONS FOR LOW-IMPACT DEVELOPMENT AND COASTAL RESTORATION
- IDENTIFY AREAS FOR COASTAL RESTORATION PROJECTS
- ENGAGE AND EDUCATE THE COMMUNITY
- CREATE AN ONLINE RESOURCE WITH INFORMATION ON ADAPTATION

12

Project Initiation and Direction

PARTICIPATION ACROSS MUNICIPAL DEPARTMENTS

- STORMWATER & TRANSPORTATION SERVICES
- ENERGY & ASSET MANAGEMENT
- ENGINEERING
- GROWTH AND DEVELOPMENT
- EMO AND SJFD

EXTERNAL STAKEHOLDERS

- SAINT JOHN ENERGY
- PORT SAINT JOHN
- QUEST
- RV ANDERSON & ASSOCIATES

13

Background & Gap Analysis

IDENTIFIED THE IMPACTS OF CLIMATE CHANGE IN SAINT JOHN AND STRENGTHS AND GAPS IN MUNICIPAL AND PROVINCIAL REGULATIONS

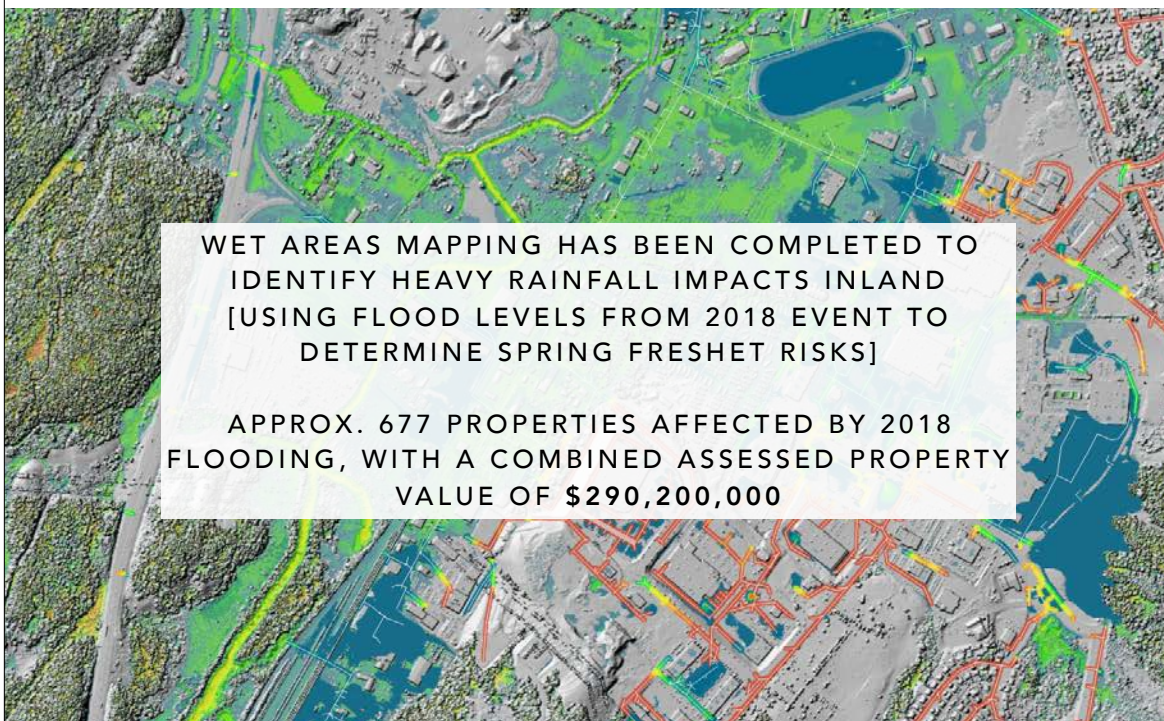
MUNICIPAL POLICIES CLIMATE ANALYSES INCLUDE

- PLAN SJ
- MOVE SJ, TRANSPORTATION STRATEGY
- 2016 STATE OF THE INFRASTRUCTURE REPORT
- ASSET MANAGEMENT ROAD MAP
- THE CITY OF SAINT JOHN FLOOD RISK AREA BY-LAW
- A BY-LAW RESPECTING DRAINAGE IN THE CITY OF SAINT JOHN
- STORM DRAINAGE DESIGN CRITERIA MANUAL

14



Assessing Vulnerabilities: Inland Flooding



WET AREAS MAPPING HAS BEEN COMPLETED TO IDENTIFY HEAVY RAINFALL IMPACTS INLAND [USING FLOOD LEVELS FROM 2018 EVENT TO DETERMINE SPRING FRESHET RISKS]

APPROX. 677 PROPERTIES AFFECTED BY 2018 FLOODING, WITH A COMBINED ASSESSED PROPERTY VALUE OF \$290,200,000

15



Assessing Vulnerabilities: Sea Level Rise



USING PROVINCE OF NEW BRUNSWICK'S DRAFT COASTAL FLOOD HAZARD MAP HELP TO DETERMINE LOCAL IMPACTS

APPROX. 1,734 PROPERTIES AFFECTED BY SEA LEVEL RISE FLOODING INCLUDING 190 INDUSTRIAL PROPERTIES WITH A COMBINED ASSESSED PROPERTY VALUE OF APPROXIMATELY \$1,093,400,000

16



Assessing Vulnerabilities: Ecological Constraints

URBAN TREE INVENTORIES COMPLETED BY ACAP SAINT JOHN IN THE CENTRAL PENINSULA AND LOWER-WEST SIDE NEIGHBOURHOODS.
NORTH END INVENTORY WILL BE COMPLETED IN 2019.

ANNUAL PUBLIC BENEFITS OF URBAN TREES IN SAINT JOHN (\$/TREE)

ECOSYSTEM SERVICE	ENERGY	CO ₂	AIR QUALITY	STORM-WATER	AESTHETIC/ OTHER	TOTAL
CENTRAL PENINSULA	\$12.83	\$1.73	\$0.95	\$10.02	\$53.76	\$79.29
LOWER-WEST SIDE	\$42.39	\$3.73	\$4.55	\$18.68	\$34.01	\$103.34

17



Assessing Vulnerabilities: Social Measures

IDENTIFYING IMPACTS THAT FLOODING, INCREASED TEMPERATURES AND AIR QUALITY DEGRADATION WILL HAVE ON VULNERABLE POPULATIONS:

19% OF THE POPULATION OF SAINT JOHN IS ABOVE THE AGE OF 65

22% OF THE POPULATION OF SAINT JOHN IS CONSIDERED LOW INCOME

SEA LEVEL RISE FLOODING WILL DIRECTLY IMPACT APPROXIMATELY 32% OF SAINT JOHN'S POPULATION

18



Building Capacity & Understanding

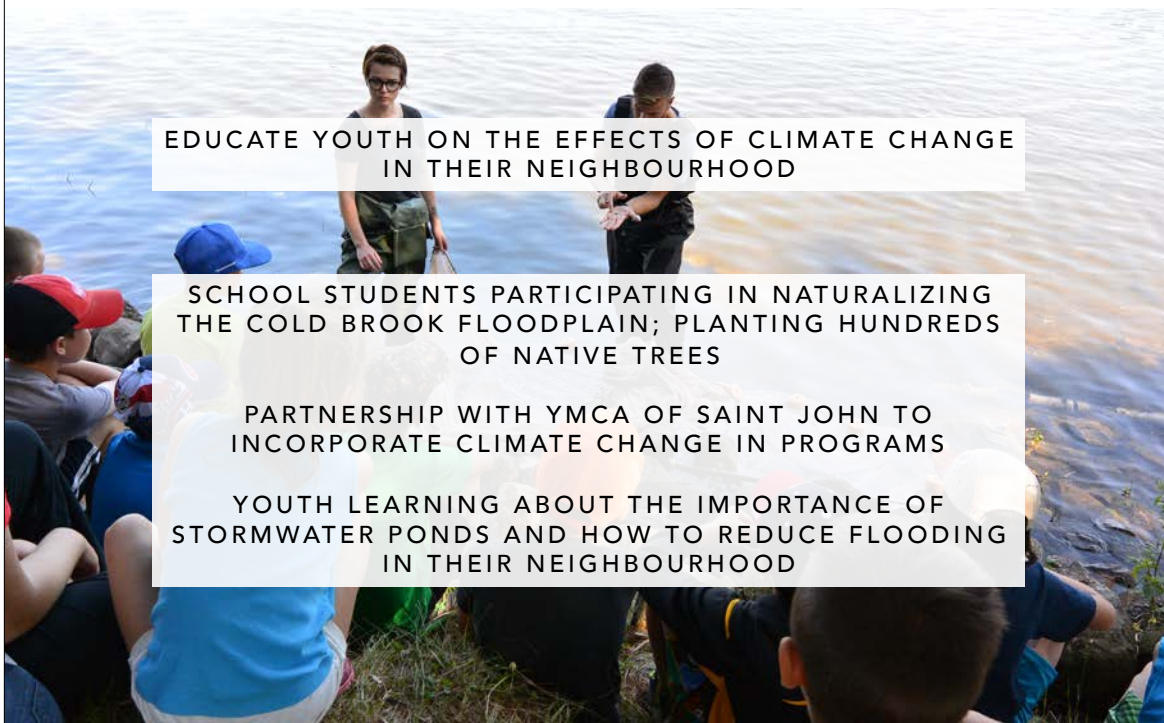


WORKING WITH COMMUNITY GROUPS TO IDENTIFY ADAPTATION MEASURES THAT WILL BE BENEFICIAL TO THEIR NEIGHBOURHOODS

19



Youth Capacity & Understanding



EDUCATE YOUTH ON THE EFFECTS OF CLIMATE CHANGE IN THEIR NEIGHBOURHOOD

SCHOOL STUDENTS PARTICIPATING IN NATURALIZING THE COLD BROOK FLOODPLAIN; PLANTING HUNDREDS OF NATIVE TREES

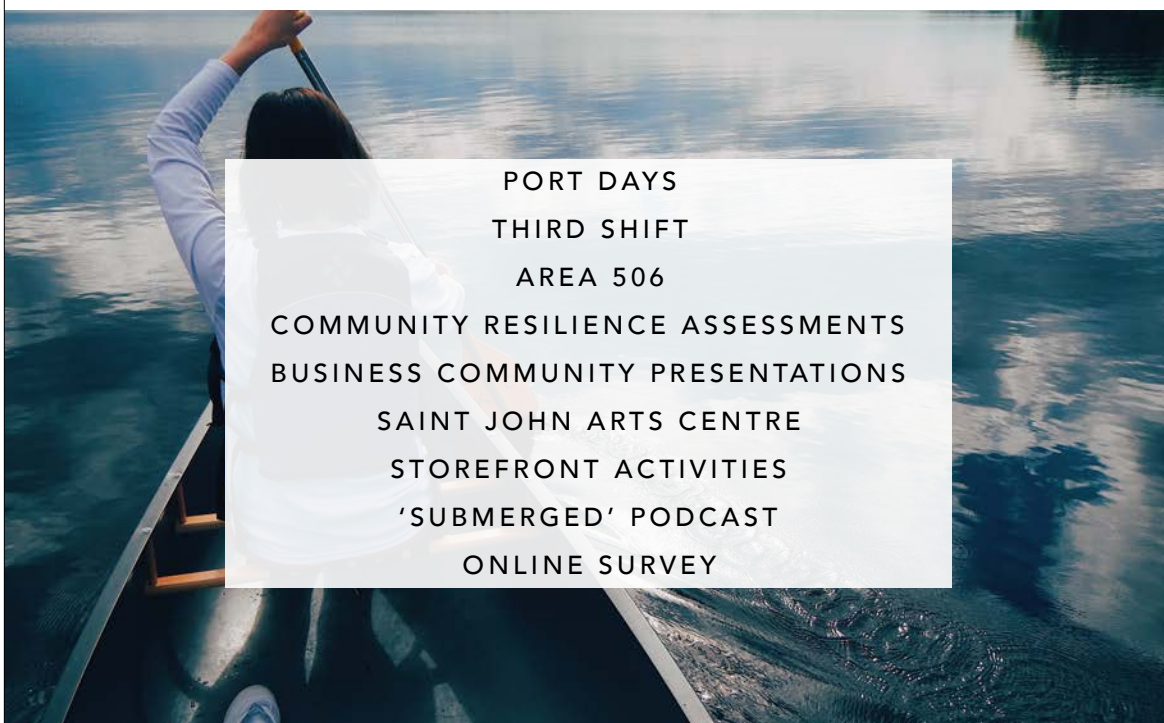
PARTNERSHIP WITH YMCA OF SAINT JOHN TO INCORPORATE CLIMATE CHANGE IN PROGRAMS

YOUTH LEARNING ABOUT THE IMPORTANCE OF STORMWATER PONDS AND HOW TO REDUCE FLOODING IN THEIR NEIGHBOURHOOD

20



Amplifying Voices: Community Engagement



PORT DAYS

THIRD SHIFT

AREA 506

COMMUNITY RESILIENCE ASSESSMENTS

BUSINESS COMMUNITY PRESENTATIONS

SAINT JOHN ARTS CENTRE

STOREFRONT ACTIVITIES

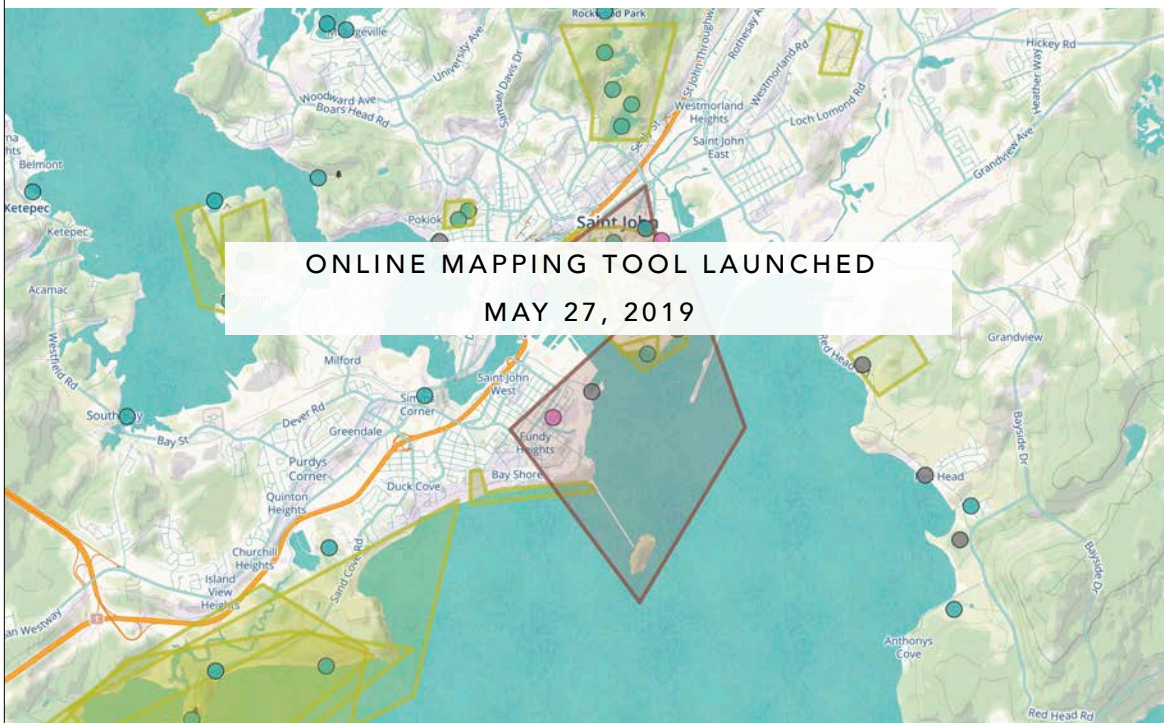
'SUBMERGED' PODCAST

ONLINE SURVEY

21



Amplifying Voices: Participatory Mapping



ONLINE MAPPING TOOL LAUNCHED

MAY 27, 2019

22



What Lies Ahead

COMMUNITY ENGAGEMENT:
MAY – SEPTEMBER 2019

COMPLETION OF RISK AND VULNERABILITY ASSESSMENT:
SEPTEMBER 2019

COLLECTION OF FEEDBACK AND REVIEW:
OCTOBER 2019

COMPLETION OF ACTION REGISTER:
OCTOBER – NOVEMBER 2019

FINAL REVIEWS, TRANSLATION:
DECEMBER 2019 – JANUARY 2020

COMMON COUNCIL:
FEBRUARY/MARCH 2020

SUBMISSION OF FINAL PLAN:
MARCH 2020

23



Local Action Toward Resilience

MANAGE RAIN WHERE IT FALLS: ACAP STORMWATER
MANAGEMENT PROJECTS (2018 - 2019)

DEVELOP NATURALIZED STORMWATER MANAGEMENT
DEMONSTRATION SITES (RAIN GARDEN IN QUEEN
SQUARE WEST, MAY 2019)

WORKING WITH CITY STAFF TO IMPROVE STORMWATER
RETENTION PONDS (NB ETF-FUNDED IN 2018)

FLOODPLAIN AND WETLAND RESTORATION PROJECTS
COLD BROOK & SAINT JOHN FIELD HOUSE

24



External Funding Acknowledgment



FEDERATION
OF CANADIAN
MUNICIPALITIES

FÉDÉRATION
CANADIENNE DES
MUNICIPALITÉS



Your Environmental Trust Fund at Work



RBC
Blue Water
Project



TD Friends of the
Environment
Foundation



25



FOR MORE INFORMATION

ACAPSJ.ORG/CLIMATECHANGE

FACEBOOK.COM/ACAPSJ

@ACAPSAINTJOHN ON TWITTER

@ACAPSJ ON INSTAGRAM

26