

LORD BEAVERBROOK RINK



History of the LBR

- Lord Beaverbrook gifted the LBR to city youth in 1960. Owned by City & run by the Volunteer Board
- Provided decades of service to the community
- Generations of kids played hockey
- Allan Cup Champs – Vitos
- Hardy Cup Champs - Mooseheads



LBR

Hockey Community

- 10 Community Hockey Teams (Schoolboy)
- Many Minor Hockey Teams (IP 1-Midget)
- 2 High School Hockey Teams
- 12 City Gents Hockey Teams
- 6 Irving League Hockey Teams
- Pick Up Hockey



Other Groups & Participants

Ice Season

- Saint John Figure Skating Club
- Public Skate
- Senior Skate
- Parent & Tot Hockey
- Parent & Tot Skating
- Special Events (Several Tournaments)
- Walking Track

Regular Season

- Lacrosse
- Fundy Gymnastics Show
- Wrestling
- Mixed Martial Arts
- Concerts (April Wine, Beegees, BTO, Johnny Cash, Beach Boys, etc.)
- Ball Hockey (men & women)
- Walking Track

LBR Community

- Incorporates several teams & even more spectators
- Even more patrons with tournaments
- Approximately 200 per day – male/female, young/old
- Over 24 week winter season: 36,000 regular users plus families, spectators and friends



Board & Staff

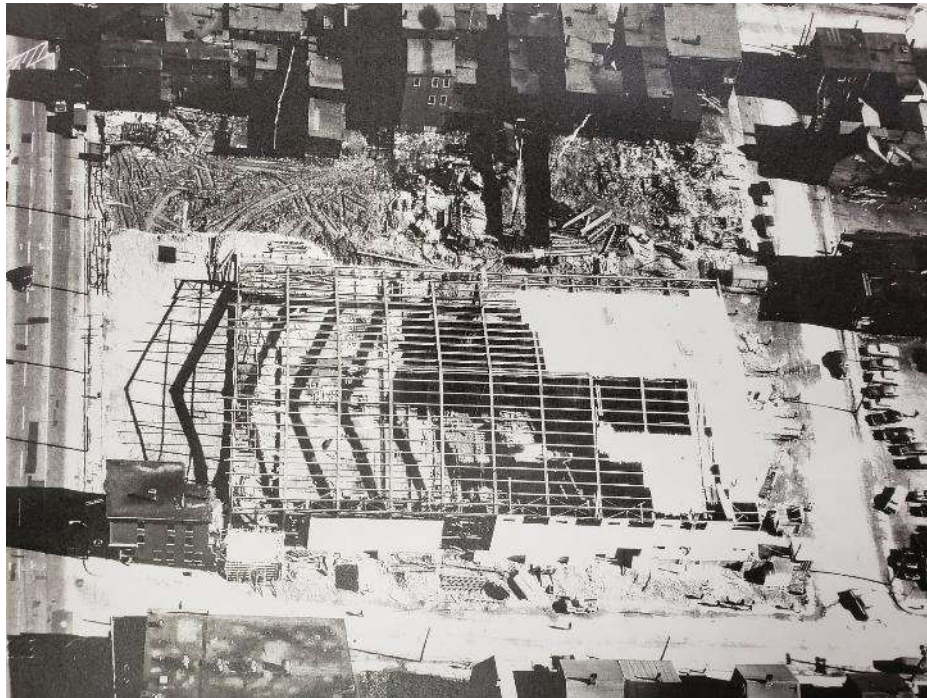
The LBR has 7 board members and 5 staff.

Owned by the City – for use of SJ Youth & run by Volunteer Board.



Key Location

North End



Key Location

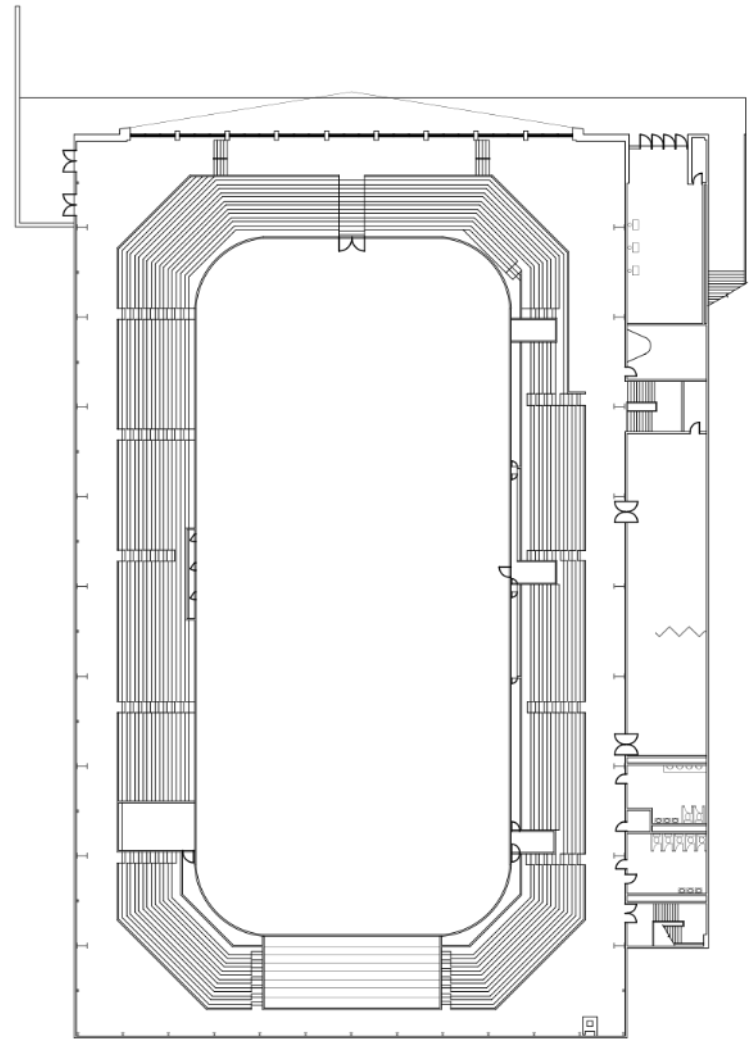
North End

	Quispamsis	Saint John	North End
Overall Poverty Rate 2013	6.3%	19.5%	25.5%
Child Poverty Rate 2013	8.3%	31%	41.4%

The LBR is located in a high priority neighbourhood. We believe it is our job to help improve the situation.

Current State of LBR

- Board working to maintain
- Over the years, taken care of *gem*
- Solid structure - no glaring deficiencies
- Maintenance & Upgrades
- New Ice-Resurfacer
- Easily accessible location wise
- Seating for approx. 2000 people
- Major equipment in good shape



Recent Upgrades & Improvements

- Front leak sealed
- New locks & doors
- Dressing room floors
- LED lights
- Walking Track
- Revamped office
- Security System & Gas Detection
- Website/Social Media



Newly Installed Walking Track

Partnered with business leaders and through donations, in kind support and volunteers – the walking track was designed, materials were fabricated and the track was built.





Long Term

Revitalization

By rebranding and providing a facility with programs that can aid in the revitalization of the North End in Saint John.

Concerns Facing the LBR

Cleanliness

A committee of board members was formed to help resolve this issue. Steps have been taken and staff are on board to revitalize the building through maintenance and regular cleaning. Patrons have provided lots of positive feedback regarding the ongoing changes.

Canteen

The canteen not being operational during peak times (games and tournaments) was a concern of many patrons. The canteen is currently operating during the appropriate times for patrons looking to grab a bite or a drink.

Parking

As it currently stands, the parking situation at the LBR is less than ideal. There are only a few spaces reserved for rink patrons and with the loss of a portion of the parking lot, the entrance has become small and narrow which poses a safety risk and drastically reduces accessibility.

Moving Forward



**Revamped
Main Entrance**



**Work with businesses
& volunteers**



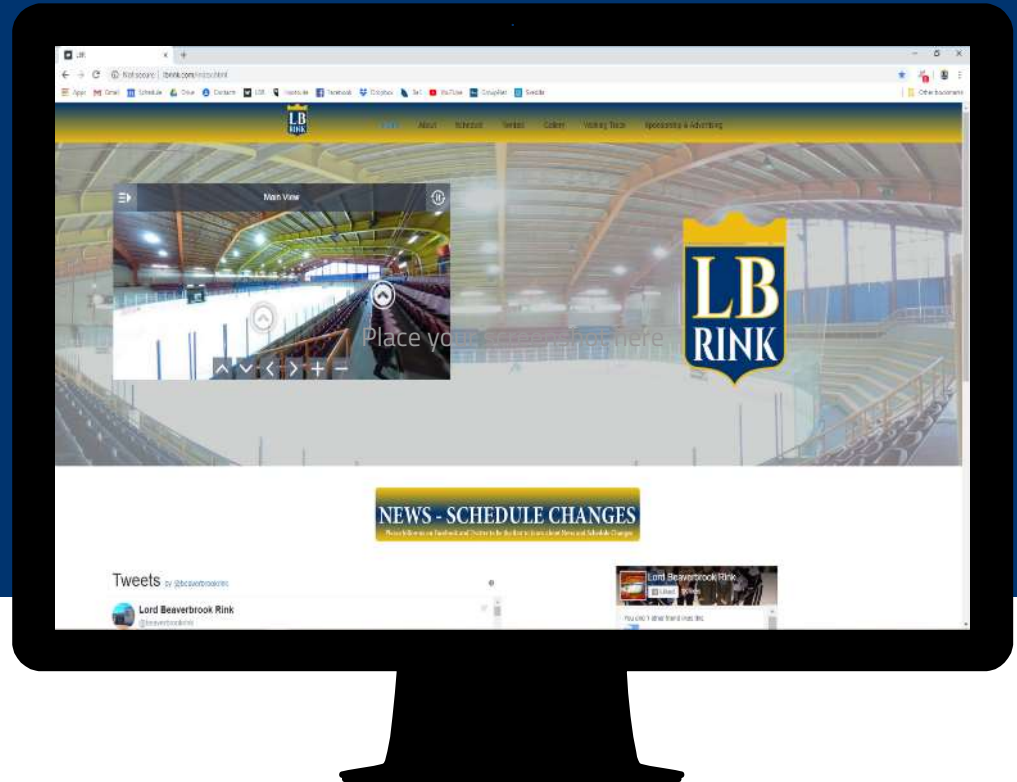
**Apply for
Grants**

- Colour/Design for main entrance
- Add content to website
- Preventative maintenance

LBR Website

360° tour of the LBR on
home page

Check our new website that
will continue to grow with
us.





Thanks!

Any questions?

You can find me at
lordbeaverbrookrink@gmail.com