

naturalforces

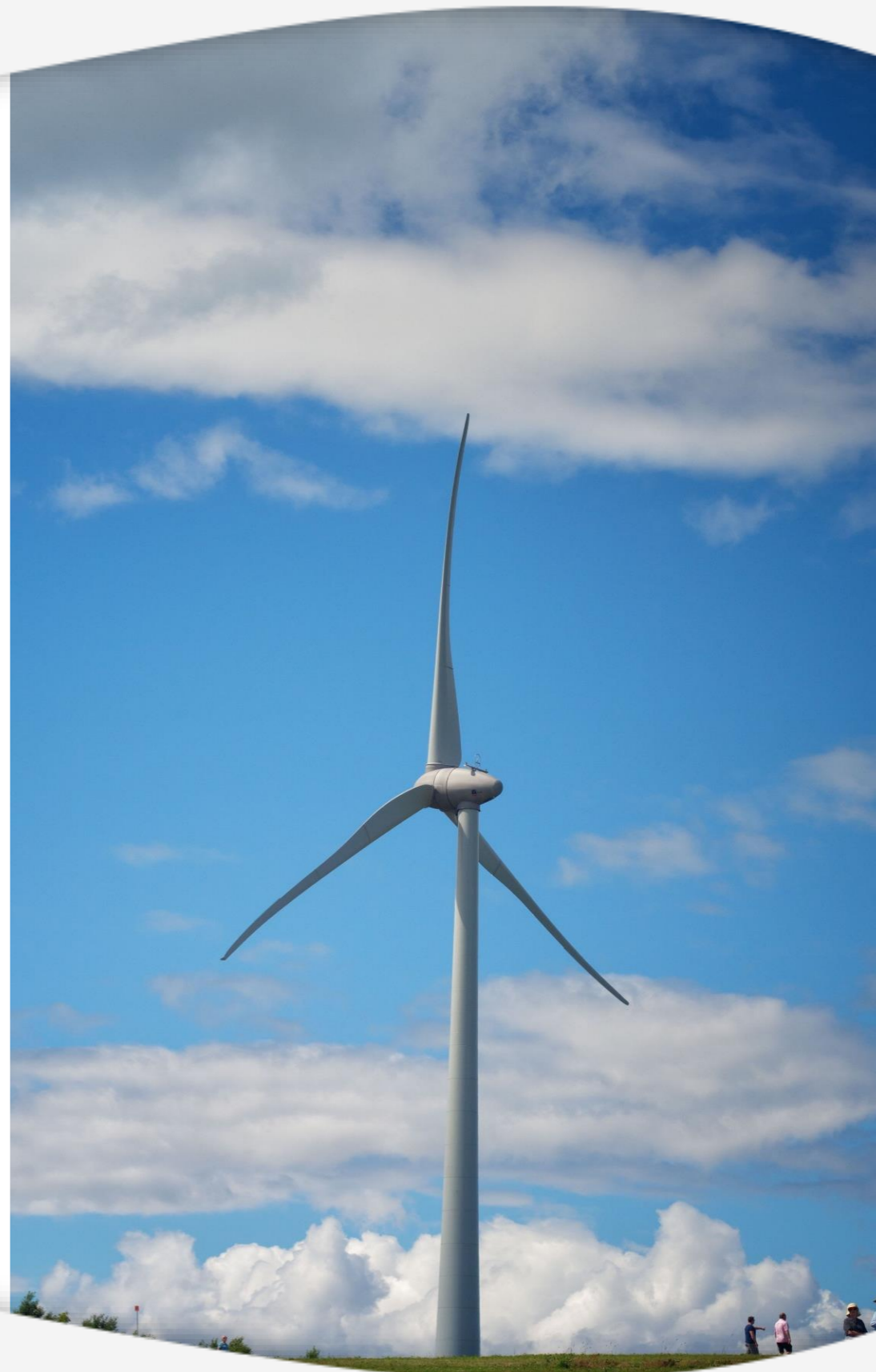
Proposed Burchill Wind Project

Presentation by Natural Forces
October 2019



Natural Forces

- Private Independent Power Producer based in Halifax
- Active in the renewable energy sector since 2001
- Develop, Construct, Own, & Operate RE projects across Canada
- Wind, hydro, solar projects in development in BC, SK, NB, NS & NFLD



Natural Forces (Cont.)

• Operating Assets (by Project):

- Kent Hills (NB): 150 MW (with Trans-Alta)
- Community Projects (NS): 32.5 MW (8 projects in aggregate)

• Development Assets (Under Contract):

- Zonnebeke Wind Farm (BC) 15 MW (2019)
- Sukunka Wind Farm (BC) 15 MW (2019)
- Richibucto Wind Project (NB) 3.8 MW (2019)
- Wocawson Energy Project (NB) 20 MW (2019)
- Kent Hills (NB) 17.8 MW (2018)
- Mary's Harbour (NL) 175 kW (2017-18)
- Various Solar (NS) 1MW (2018-2019)



What Makes us Unique?

➔ Our Partnerships!

- We partner with First Nations, Universities, CEDCs, and other community entities on all our projects.

Some of Our Partners:



Tobique First Nations

CAPE BRETON UNIVERSITY



ASSEMBLY OF NOVA SCOTIA
MP'KMAQ CHIEFS



Pictou Landing First Nation



Proposed Burchill Wind Project


- 20 – 42MW (5-10 turbine) project located on Crown land to connect with the Saint John Energy grid
- Approximately 15km southwest of the City of Saint John, near Lorneville, NB
- Scheduled to be online by the end of 2021




Burchill Wind Project


Proposed 10 Turbine Layout


Legend


 Proposed Turbine Locations


 Site Lands

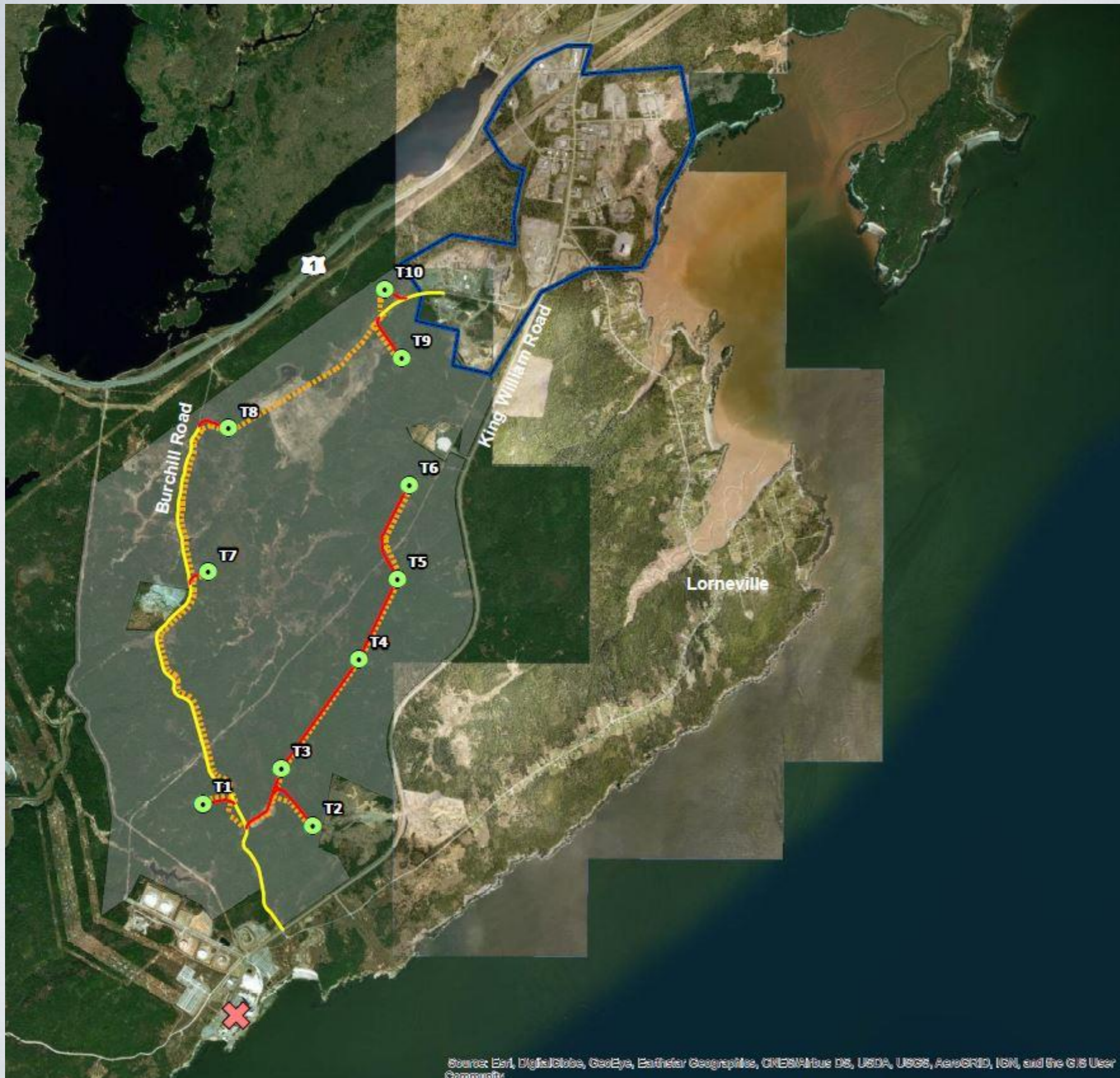
 Roads to be Upgraded

 Proposed New Roads

 Collection System

 Spruce Lake Industrial Park

 Coleson Cove Generating Station



1:45,000

0 0.5 1 2 3

Kilometers

WGS 1984 Web Mercator Auxiliary Sphere

Production Date: Sep 16, 2019

natural forces

Current Activities

- Environmental Surveys
- Installing Wind Monitoring Equipment
- Public & First Nation Consultation
- Meeting with Regulators
- Wind Resource Assessment
- Micro-siting Turbine Layout
- CEDC Investment Opportunity Discussions

Environmental Impact Assessment

- Wind farms greater than 3MW
- Field and desktop surveys assess potential impacts
 - Avian & Bat
 - Noise
 - Hydrology
 - Shadow Flicker
 - Archaeology
 - Vegetation & Habitat
- Reviewed by a Technical Review Committee
- Department of Environment and Local Government provides a recommendation to the Minister
- Approximate approval date: August 2020



Public Consultation

- EIA Standards for Public Consultation
- 1st Public Open House Sept 24th
- Newsletters to Local Residences with Updates
- Website Development

www.naturalforces.ca/burchill-wind-project

- Questions are encouraged!



Economic Development

- City of Saint John to receive property tax revenue
- Local contractors employed during construction
 - Civil Works
 - Concrete Foundation
 - Electrical Works
 - Crane Operations
- Local services and accommodations used by workers
 - Restaurants
 - Grocers
 - Hotels
 - Gas Stations

CEDC in New Brunswick

*“Community Economic
Development Corporation”*

“A CEDC is an opportunity for New Brunswickers to channel their investment dollars into their local economy. A CEDC is a pool of money raised by selling shares (or other eligible securities) to individuals in a defined community. .”

- CEDC capital invested within the community;
- The CEDC program is linked to the New Brunswick Small Business Investor Tax Credit (SBITC) program which offers a 50% personal income tax credit to investors on eligible investments made in CEDCs.
- The investment could be RRSP eligible; and,
- The investment can yield dividends.



An aerial photograph of a wind farm. Two white wind turbines are visible, one on the left and one in the center. They are situated in a landscape of green fields and dense forests. A road or path winds through the area. The sky is white, and the bottom of the image is framed by a white curved border.

natural forces

Thank You

Contact:

Katherine Dorey
kdorey@naturalforces.ca
(902) 422-9663