

# Mapping possibilities for renewable energy development in City of Saint John

# Background and Purpose

**Project: Accelerating Implementation of Renewable Energy**, is a 2 year project involving 5 cities, and funded by Federation of Canadian Municipalities.

**Timeline:** now until December 2020

**Deliverables/Benefit to City:** Renewable Energy Mapping Assessment – Technical and Social, to advance implementation of renewable energy to meet GHG reduction targets in Climate Change Action Plan.

**Engagement:** September 23 to October 2. Includes:

- Public survey
- Community stakeholder workshop
- Accelerator workshop on September 25 for municipal staff/council
- Follow up session with staff in 2020

**Who's involved:** University of Guelph, CEKAP, QUEST, FCM (fund provider), 5 cities

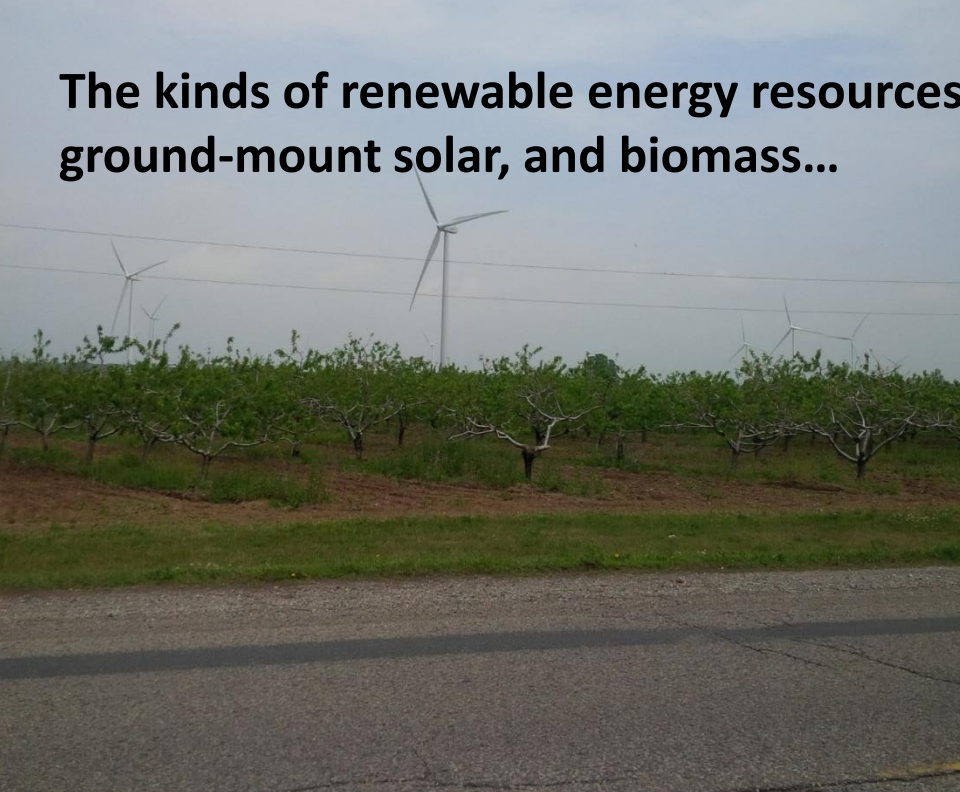
**Which stakeholders:** municipality, energy utilities, industry, local interest groups, public (survey), province

**What we need:** Connect us with stakeholders. Promote survey. Input and facilities.

**Cost to City:** no cash contribution (in kind facilities)

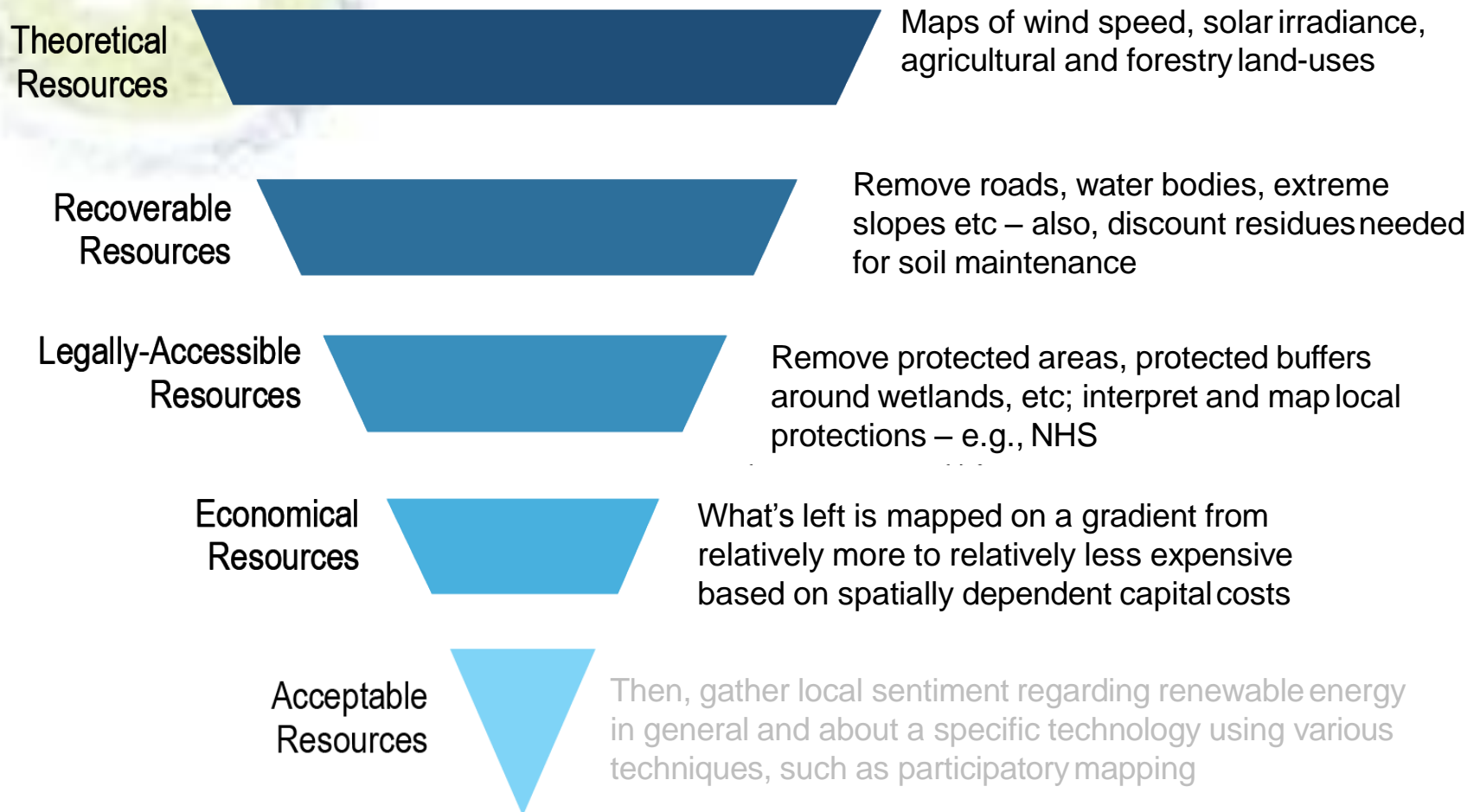
**Climate Change Action Plan** – alignment, key action for GHG reduction, approved by Council May 6, 2019

**The kinds of renewable energy resources we're focusing on in this work: wind, ground-mount solar, and biomass...**



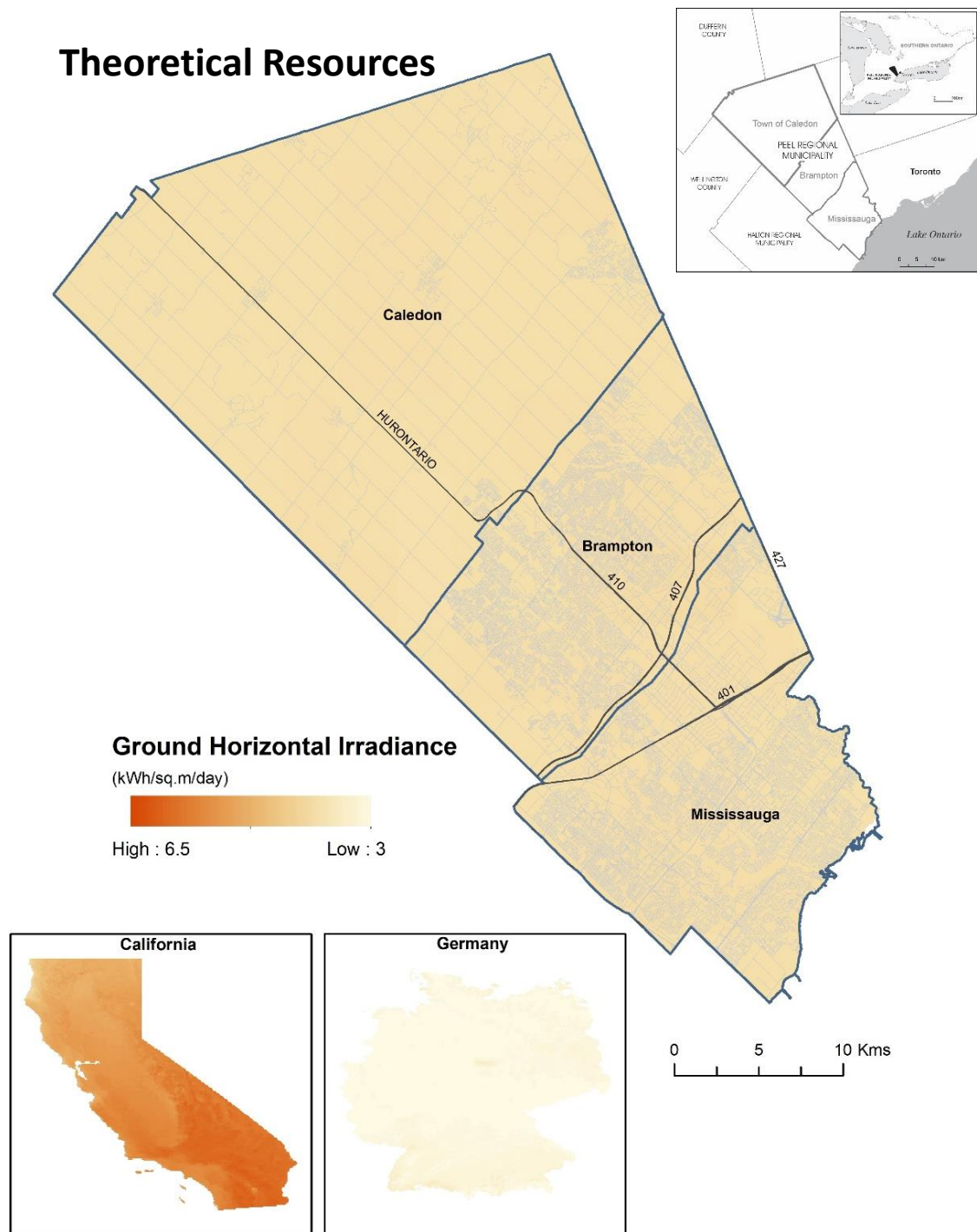


# Where are RE resources most likely to be developed? A standardized approach:



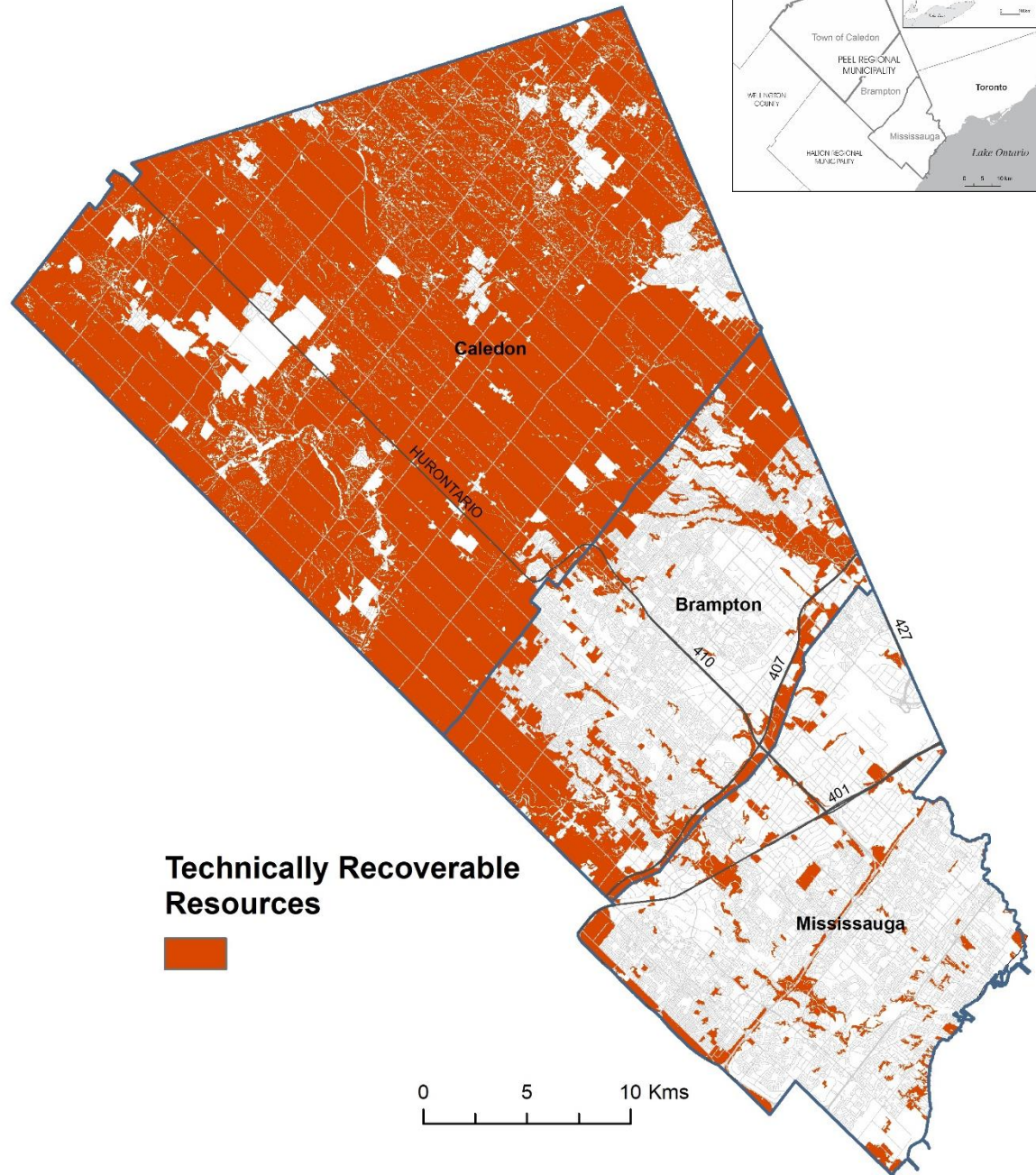
# Opportunities for Utility- Scale PV Development

## Theoretical Resources



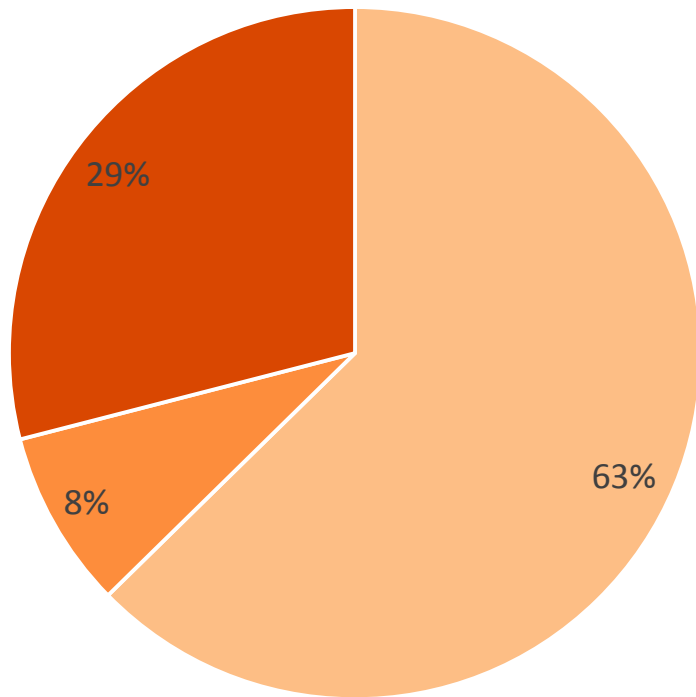
# Opportunities for Utility- Scale PV Development

## Recoverable Resources

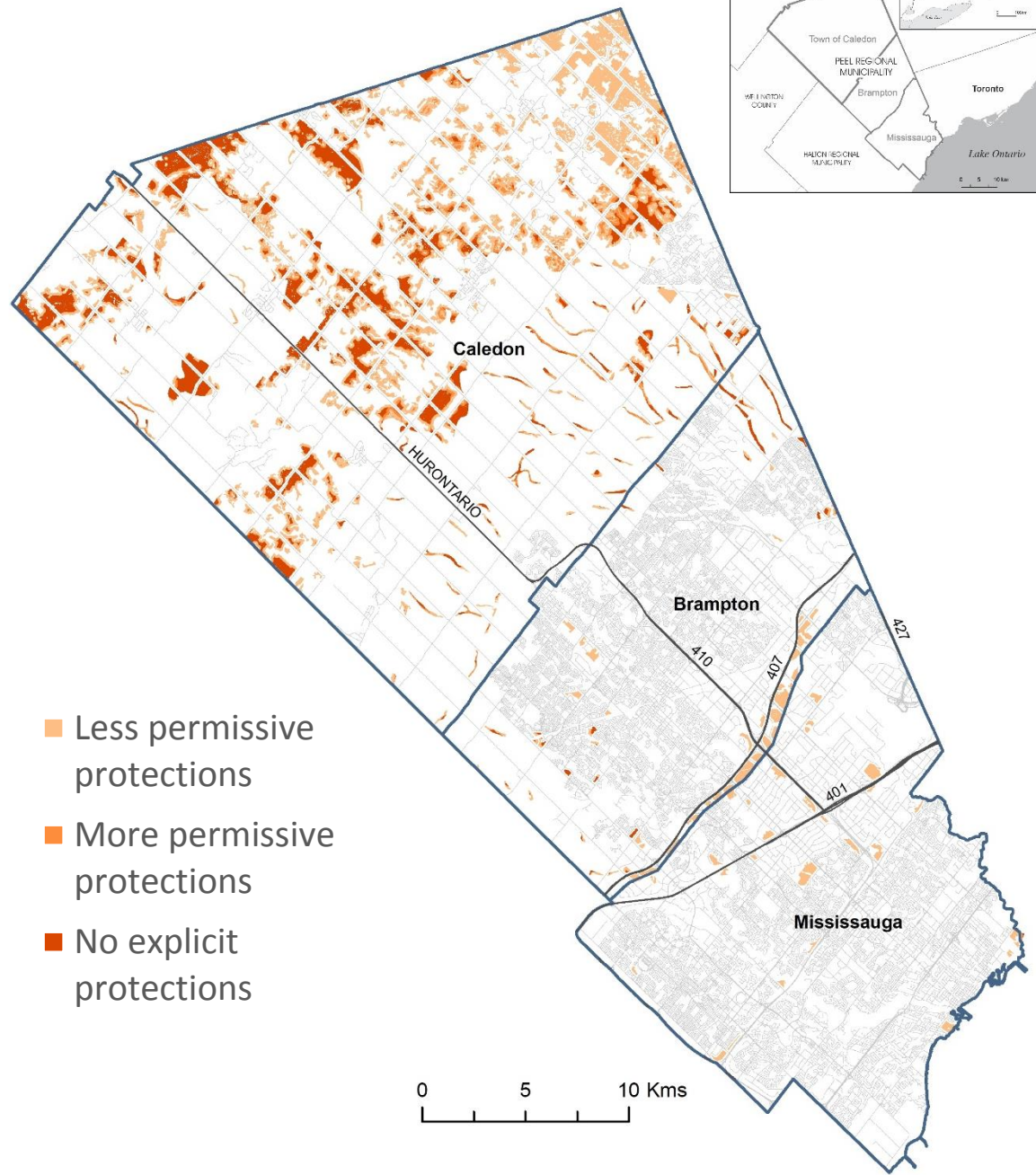




# Opportunities for Utility-Scale PV Development



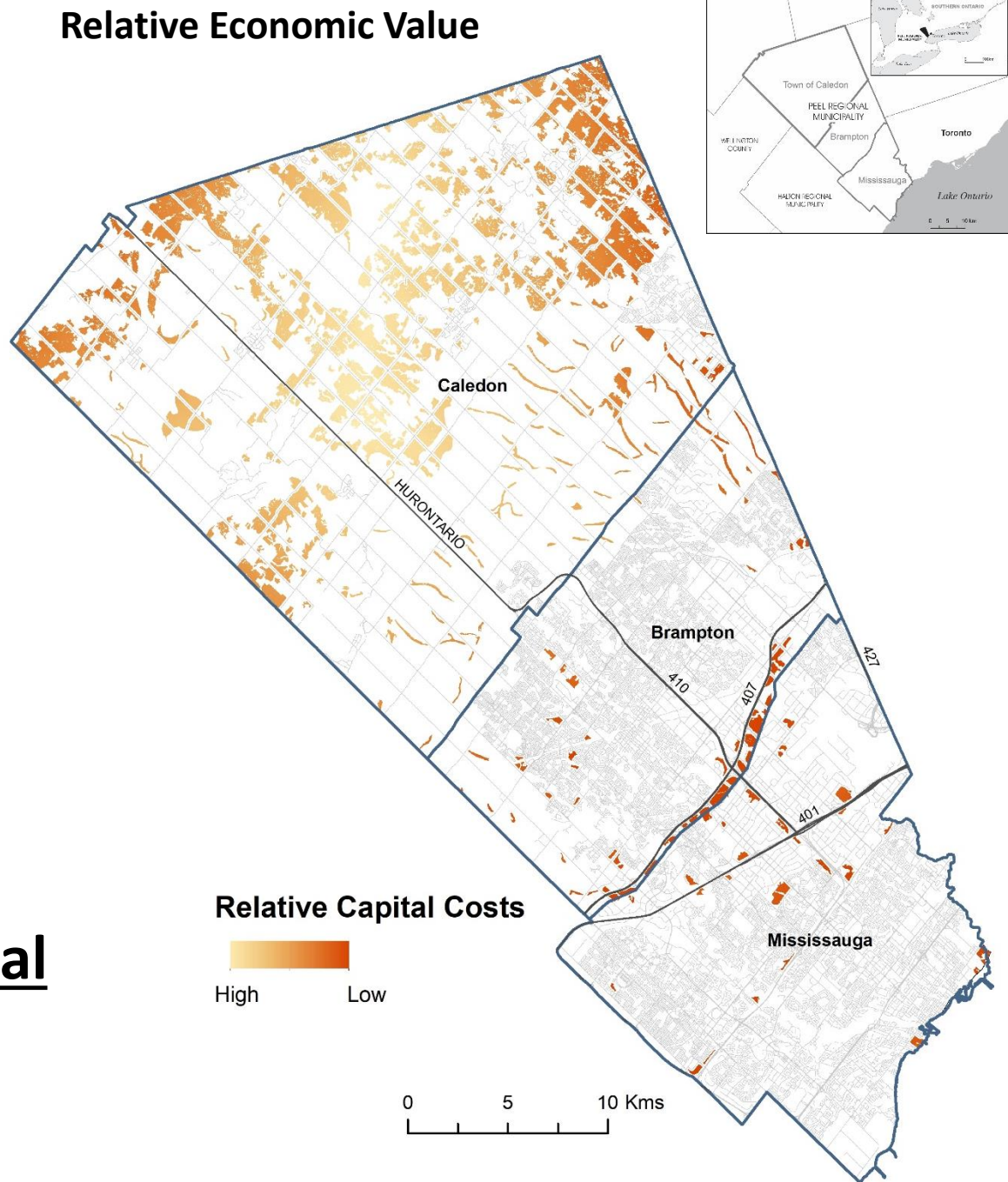
## Legally-Accessible Resources



# Opportunities for Utility- Scale PV Development

>10,800 hectares are  
technically and legally  
accessible

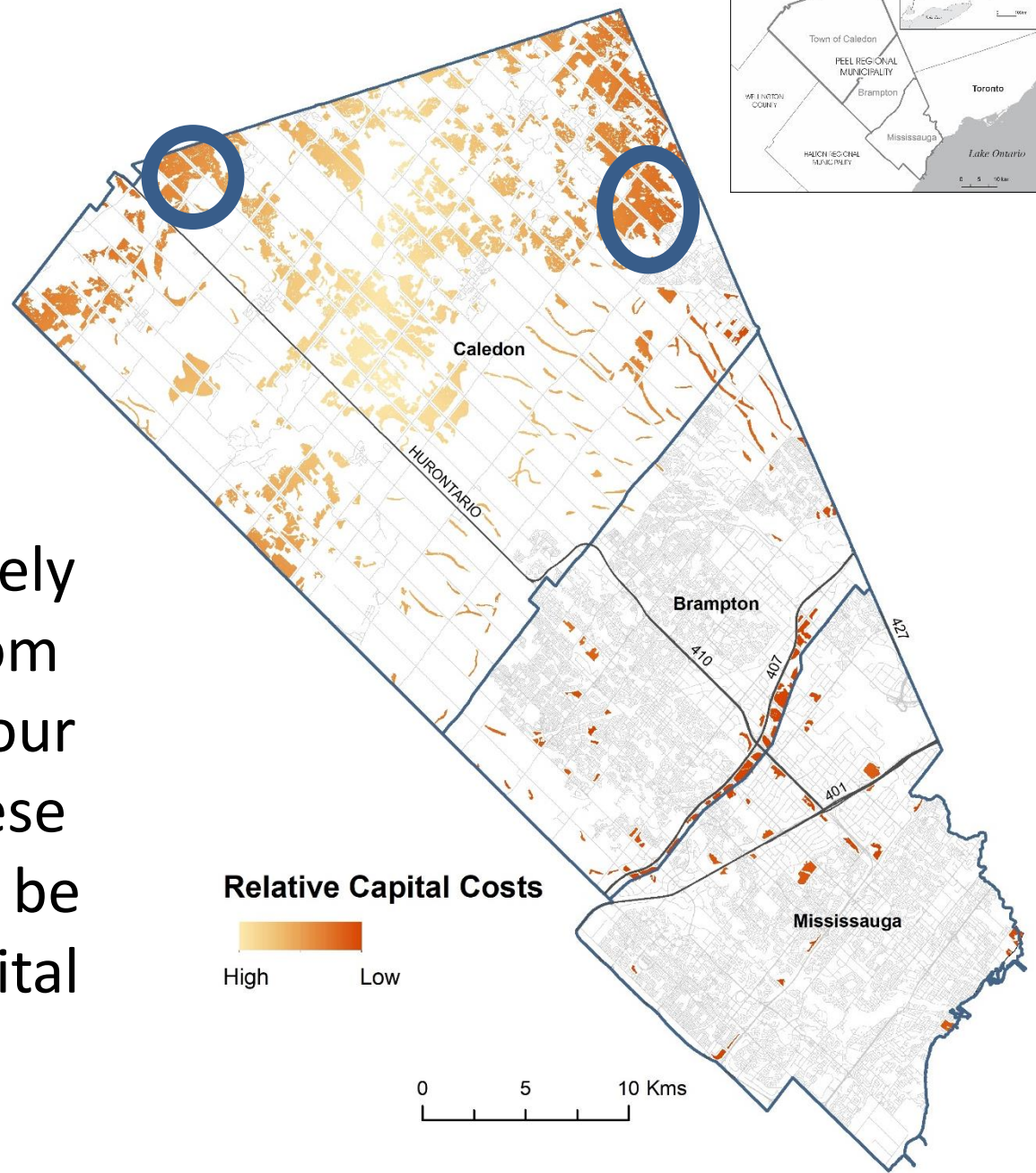
~2,700 MW of **potential**  
installed capacity



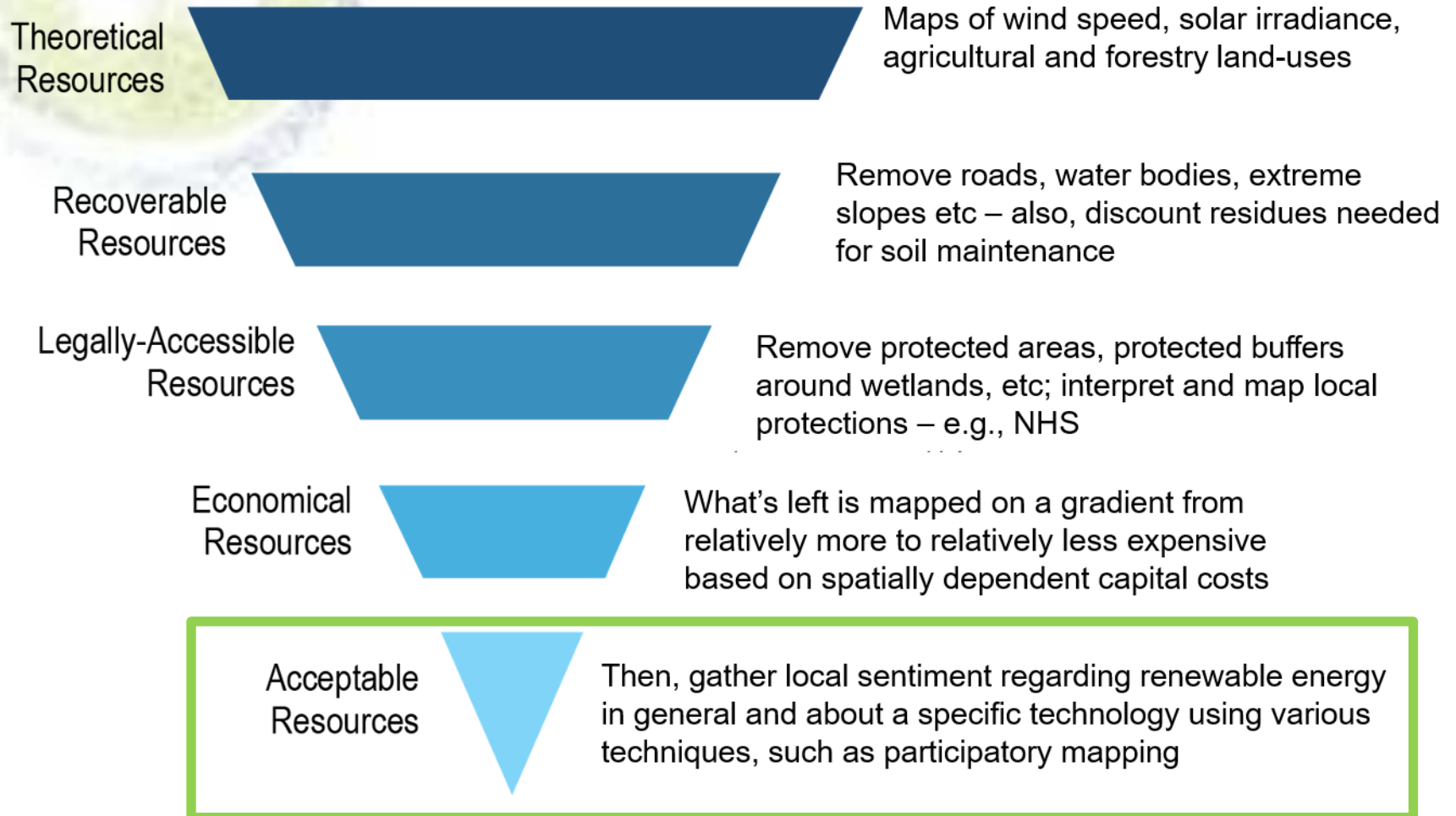


# Opportunities for Utility- Scale PV Development

Circled: areas most likely  
to receive interest from  
developers based on our  
modeled results – these  
areas are projected to be  
relatively lower in capital  
cost, and are most  
permissible



# Where are RE resources most likely to be developed? A standardized approach:



# Accelerator Workshop

## Staff & Utility Engagement

Who?

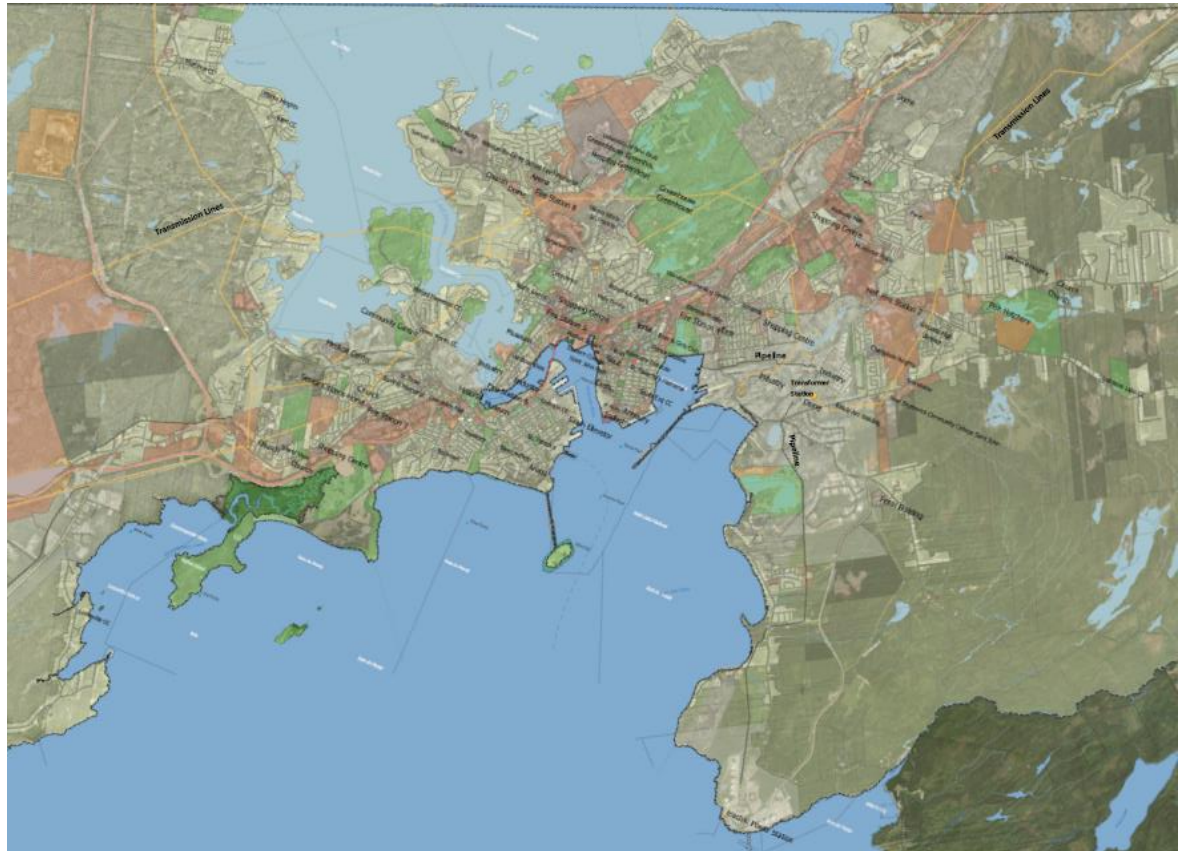
Municipal staff/council,  
and local energy utilities

Why?

- Identify barriers and opportunities for RE development
- Raise awareness

How?

- **Full day workshop**
- Open-ended surveys





# Stakeholder Focus Group

## Stakeholder Engagement

Who?

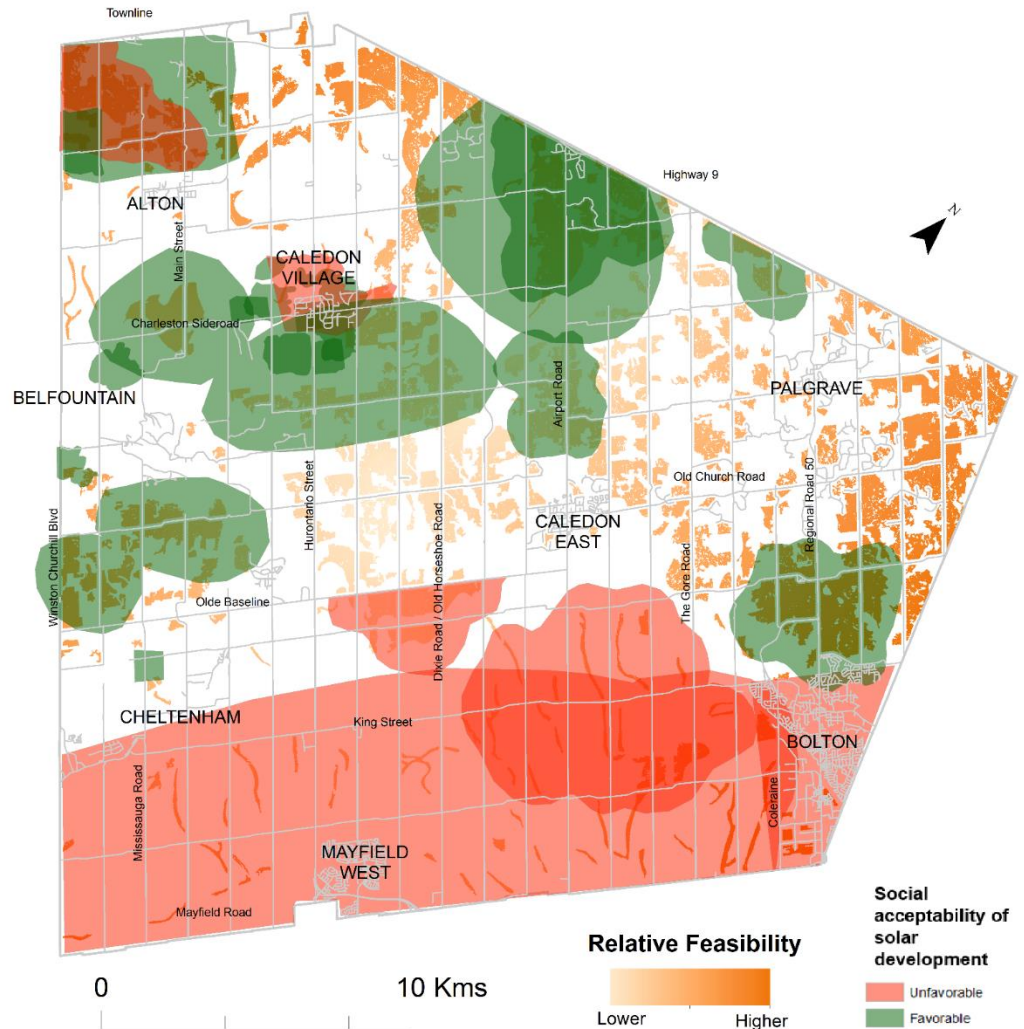
Individuals / organizations who stand to directly gain or lose from decisions about RE development

Why?

- Discuss specific issues and impacts, including options to mitigate

How?

- Targeted invitations to key constituencies
- **Focus group** centered on specific theme / issue



# Public Surveys

## Community Engagement

Who?

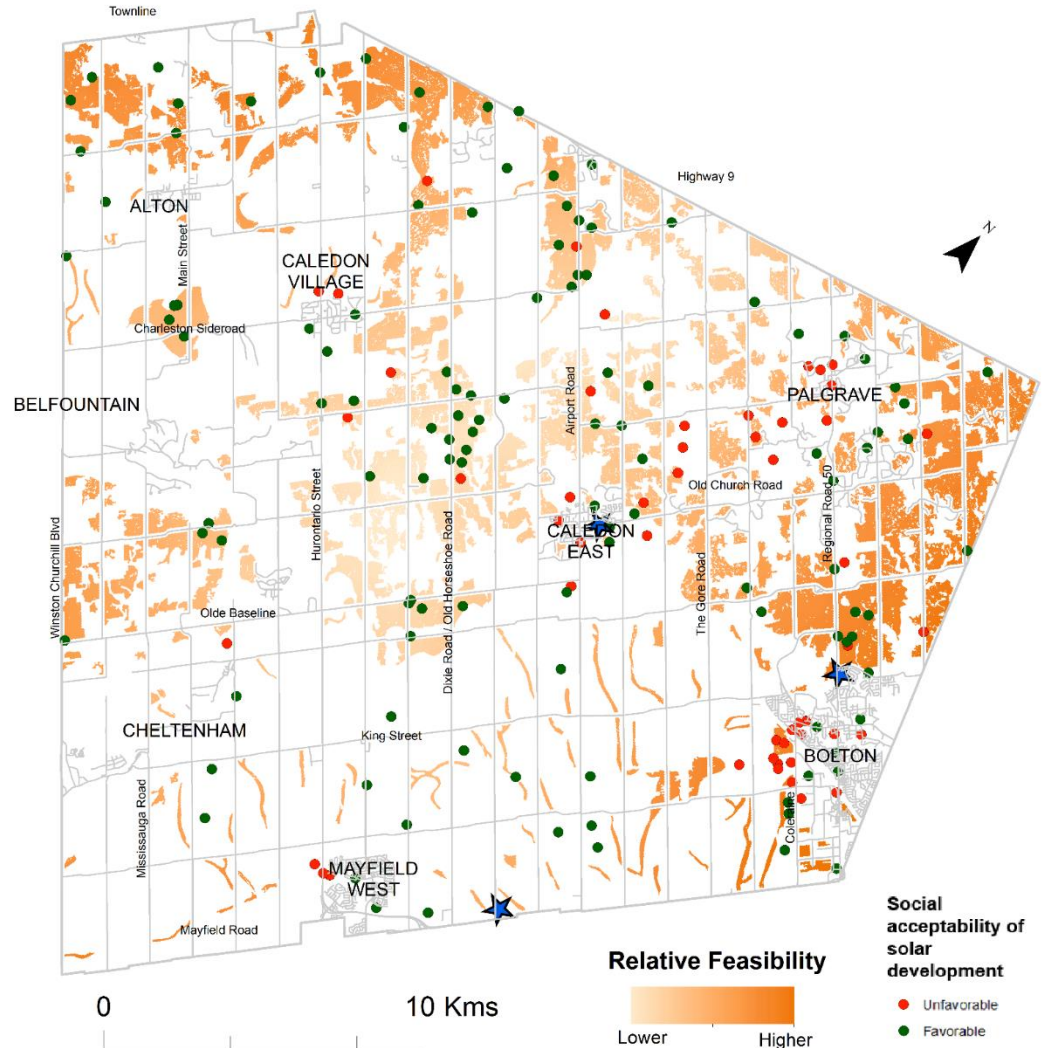
Individual and Corporate citizens of Saint John

Why?

- Identify key interests and concerns across population
- Raise awareness

How?

- Bring information to community spaces (library, farmers market).
- **Open-ended surveys**



# Enabling Implementation of CC Action Plans / Community Energy Plans

**Project:** 1 year project, involves multiple NB communities, funded by NB Environmental Trust Fund

**Timeline:** now until March 2020


**Deliverables/Benefit to City:** Readiness Assessment and Recommendations for Implementing your Climate Change Action Plan, adopted May 6, 2019

**Engagement:**

- Workshop with municipal staff and stakeholders (late October)
- Completion of assessment and recommendations report
- Follow up session with staff

**Cost to City:** no cash contribution (in kind facilities)





Can you help connect  
us to your community?

Contact:

You can reach me at [rjahns@uoguelph.ca](mailto:rjahns@uoguelph.ca) or  
(905) 906-2586.

[eoldfield@questcanada.org](mailto:eoldfield@questcanada.org)

Or (506) 440-3854

Thank you!